

# Sample Portfolio

james  
**welkenbach**  
DESIGN & VISUALIZATION

James Welkenbach

## BIM Healthcare Projects

Univ. of Michigan Surgery Center; Ann Arbor, MI

Aurora Medical Center; Hartford, WI

Albert Kahn Associates

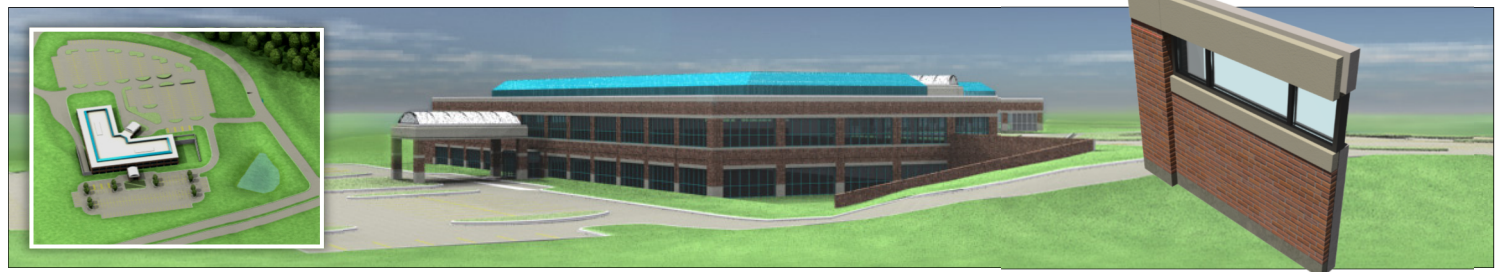
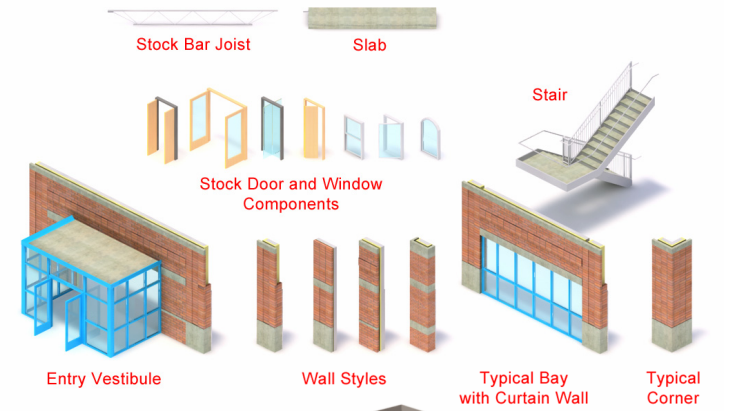
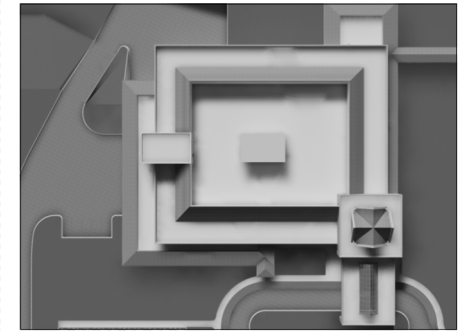
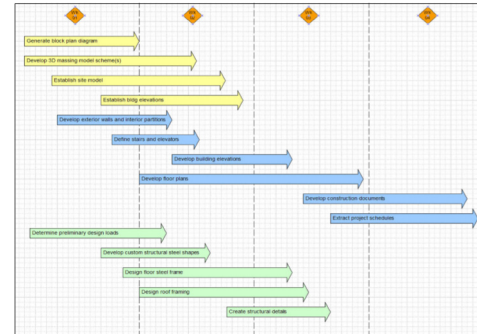
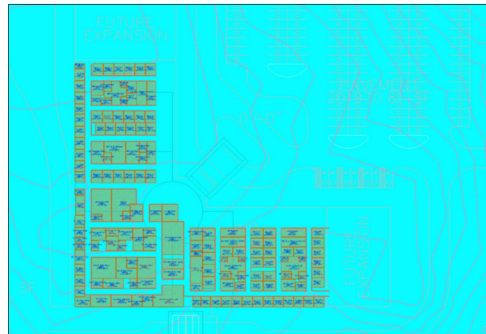
### My Roles

- Project Architect, Planner
- BIM Pilot Team Leader
- CAD and Architectural BIM
- Design Visualization Artist

### Projects Description

The Aurora Medical Center design served as a platform for a Building Information Modeling (BIM) Pilot project for Albert Kahn. The Aurora BIM design phase was planned, executed, and delivered in 4 weeks.

The Aurora project and the following University of Michigan Surgery Center project utilized a *kit-of-parts* design approach that used referenced wall/shell modules, entry canopies, and other design parts, allowing for easy global edits or swapping of the components.



James Welkenbach

## Weill Hall, Gerald R. Ford School of Public Policy

University of Michigan  
Ann Arbor, MI

*Albert Kahn Associates  
with Robert A.M. Stern Architects*

### My Roles

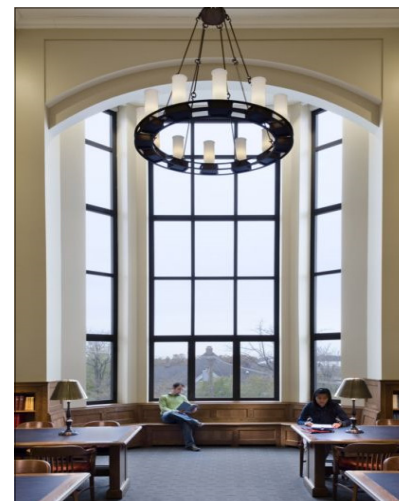
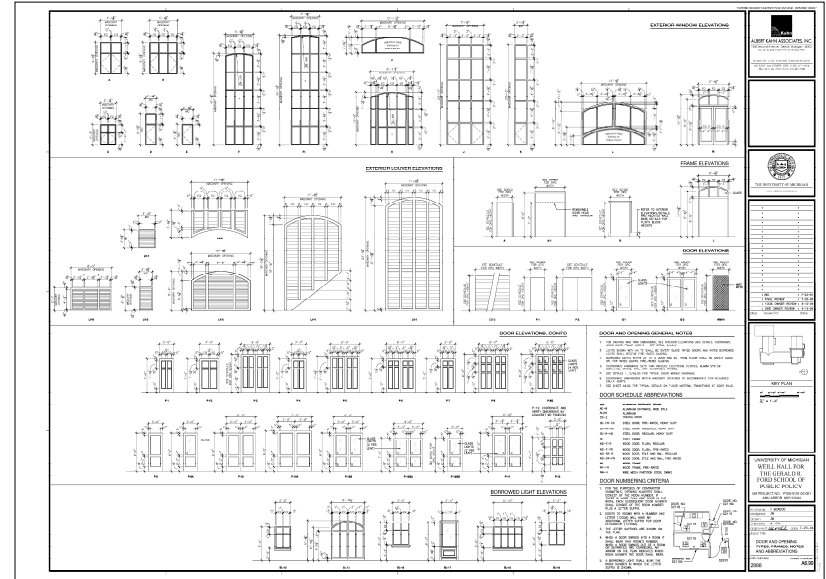
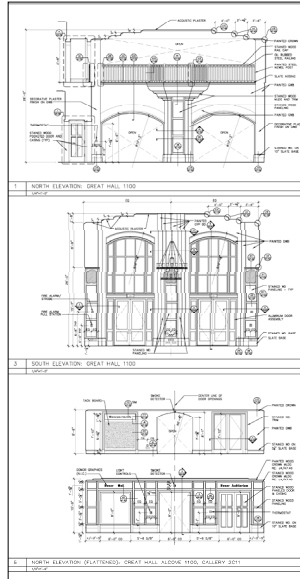
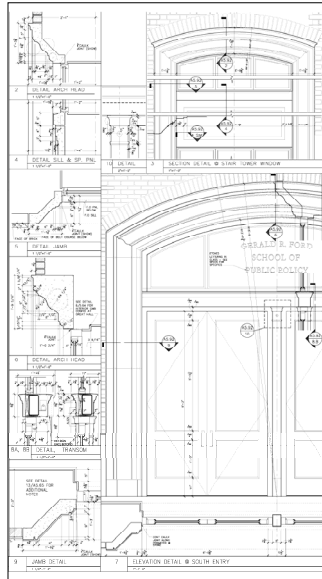
- Lead Architect for Development of Architectural Openings
- Supporting Architect for Design Development of Plans, Elevations, Stairs, Millwork, Roof and Finishes

### Project Description

Located on a steeply sloping site at the southern edge of the University of Michigan's Central Campus, the 80,000-gross-square-foot home for the Gerald R. Ford School of Public Policy marks a gateway to the University with a tower at its southern end housing a Great Hall, a library, and a skylit stair tower that will serve as beacon for the University both day and night.

Cascading steps and a stone terrace lead to a formal ground-floor entrance at the base of the tower. A second-floor entrance to the north faces the campus core across a landscaped lawn.

[jwelk.com](http://jwelk.com)



James Welkenbach

# Ordnance Operations Facility

NASA | Kennedy Space Center, FL

*Jones Edmunds & Associates, Inc.*

## My Roles

- Project Manager
- Project Architect
- BIM Manager
- Visualization Artist

## Project Description

The Ordnance Operations Facility supports an explosives storage area, contains a small workshop and serves as a badging office. The project was a Building Information Modeling (BIM) pilot demonstration for NASA.

Earning a LEED® Gold certification, the project design incorporates sustainable features including the following: a geothermal heat exchange closed refrigerant loop system in place of a conventional condensing unit; tubular daylighting devices to bring natural daylight into the interior spaces for occupant comfort and reduced energy loads; and renewable energy from ground-mounted photovoltaic solar panels.

